



OPERATOR'S MANUAL AND PARTS LIST LONG REACH HEDGE TRIMMER

THLRT2600

Spares & Support: 01793 333212

www.thehandy.co.uk

Before use please read & understand this manual, paying particular attention to the safety instructions.

CONTENTS

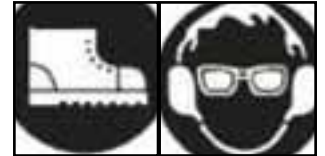
SAFETY INSTRUCTIONS	3
MAJOR PARTS	4
SPECIFICATIONS	4
FUEL	5
HINTS AND TIPS	5
OPERATION	6
MAINTENANCE	7-8
PARTS DIAGRAMS AND LISTS	10-13
EC DECLARATION OF CONFORMITY	14

SAFETY INSTRUCTIONS

Read and understand the owner's manual and the labels affixed to the hedge trimmer. Learn its application and limitations as well as the specific potential hazards. Retain these instructions for reference.

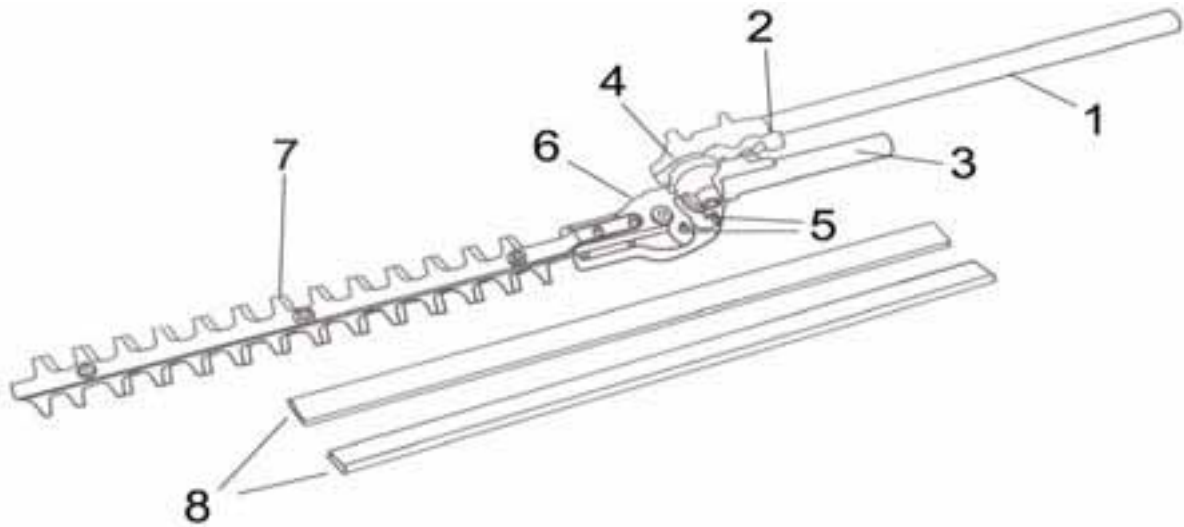


- Use sturdy footwear and a helmet with eye and ear protection. Protect exposed parts of your body. Wear heavy duty gloves, preferably made of leather.
- Do NOT operate the hedge trimmer if you are tired, ill or under the influence of alcohol or drugs.
- Do NOT smoke when using the hedge trimmer and ensure caution when handling fuel. We recommend you fuel the machine at least 3m away from where you wish to work in case any spilt fuel ignites when starting the engine.
- Ensure that bystanders, children and pets keep well away when starting or cutting - at least 15m.
- Inspect the hedge trimmer, and in particular the cutter blade, before use for any worn or damaged parts. Do not use until the parts are repaired or replaced.
- Before starting the engine make sure the cutter blade is not in contact with anything and have a clear work area and secure footing.
- Hold the hedge trimmer firmly with both hands when using and keep all parts of your body away from the machine. Always ensure a safe firm footing and do not over-reach.
- Always carry the hedge trimmer with the engine stopped and the cutter blade covered.
- Never lay the hot hedge trimmer down on dry grass or any combustible material where there is a fire risk from the hot engine.
- Only use the hedge trimmer in good light and visibility. During cold weather be aware of slippery or wet areas.
- NEVER operate the hedge trimmer in a tree or from a ladder.
- NEVER feed twigs or other material to be cut into the cutter blade with your hands. Do not lift the hedge trimmer by the cutter blades and be aware that the blades may run on after the engine has stopped.
- Please recycle the cardboard packaging in which the hedge trimmer is delivered.



Always shut off the engine before setting it down.

MAJOR PARTS



1	Lower Drive Shaft Assembly	2	Indexing Lever
3	Attachment Handles	4	Gear Adjustment Lever
5	Grease Fitting	6	Gear Case
7	Cutting Blades	8	Blade Cover

SPECIFICATIONS

Model No	THLRT2600
Fuel Tank Capacity	600 ml
Engine Displacement	25.4 cm ³
Power Rating	0.75 Kw/ 7500rpm
Fuel Mixture Ratio	25:1 Mineral Oil, For Synthetic See Below
Shaft Length	1500mm
Cutting Angle	Multi Position Articulating Head
Cutter Bar	Double Reciprocating Blade
Cutter Length	36.5cm
Cutter Pitch	30mm
Maximum Diameter Cut	25mm

FUEL

Petrol is very flammable. Avoid smoking or fuelling the hedge trimmer anywhere near a flame or sparks. Allow the engine to cool before re-fuelling. Fuel the engine at least 3m away from your work area.

- Use a ratio of 25:1 unleaded petrol to 2-stroke oil. For semi-synthetic or synthetic oils use the manufacturer's ratio. Mix in the mixing bottle provided.
- Unscrew the fuel cap, and fuel the machine to 80% capacity. Fasten the fuel cap tightly and wipe up any spillage.
- Ensure that any stored petrol/oil mixture (2-stroke) is clearly marked in a separate can and only stored for 4-6 weeks. If the hedge trimmer is not going to be used for a long period, drain the mixture from the fuel tank, start the engine and drain the carburettor of any remaining fuel.
- Dispose of any unwanted 2-stroke mixture at an authorised recycling point.



HINTS AND TIPS

Always hold the hedge trimmer firmly with both hands when using.

Before cutting ensure that the blades are running at full speed and be aware that the blades may keep moving after you have released the throttle.

This hedge trimmer has a twist handle which rotates through 180 degrees and is ideal for cutting shaped hedges.

It is advisable to cut a hedge from the bottom up sweeping the cutter bar in an arc as you move along the hedge. The double edged cutter blades allows use by left or right handed operators.

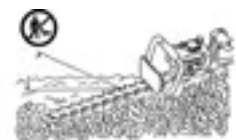
To cut the top of the hedge, hold the cutter bar at an angle of 0-10 degrees as you swing the hedge trimmer horizontally. Sweep the cutter bar in an arc towards the outside of the hedge so that the cuttings are swept onto the ground.

Pay special attention when cutting hedges which are laid out along a wire fence. If the blades makes contact with the wire damage may occur.

Do not use the hedge trimmer for long periods at a time - take a break of 10-15 mins after 50 mins use or after using one tank of fuel.

If the blades hit a stone, wire or other foreign object, turn off the engine and check for any damage immediately. Replace any damaged blades before continuing.

Do not attempt to remove any twigs or branches jammed in the cutter blades without first turning the machine off.



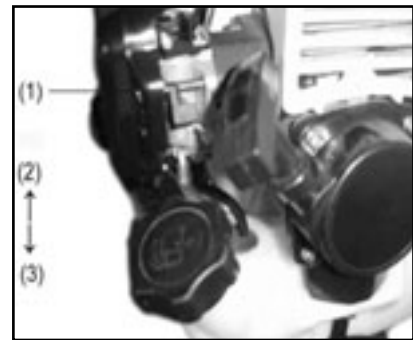
OPERATION

Before starting the engine, inspect the entire unit for loose fittings or fuel leaks, and ensure that the cutting attachment is securely fastened.

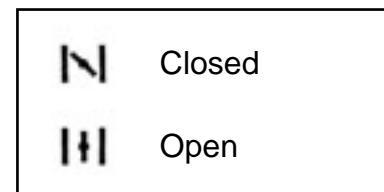
- Place the machine on a flat surface away from the area in which you intend to work.
- Fuel the machine to 80% capacity.



- Put the ignition switch (1) to "I" (start position).
- Move the choke lever (2-3) to the closed position
- Press the primer button 10 times.
- Whilst holding the unit firmly, pull on the starter rope until the machine fires.
- Open the choke up gradually and pull the starter rope again until the machine starts.
- Allow the engine to run for 2 to 3 minutes to warm up.



If starting a warm engine there may be no need to prime the engine or put the choke lever to "closed".



Stopping the Engine:

- Return the throttle to the idling position.
- Push the ignition switch to "O" (stop position).



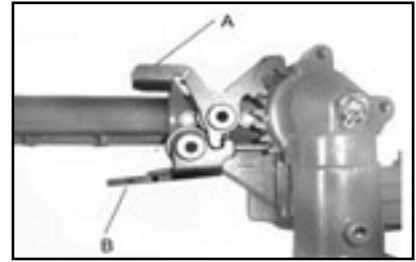
Attaching the Harness:

- Attach the clip on the harness to the loop on the control handle and adjust to suit the operator.

MAINTENANCE

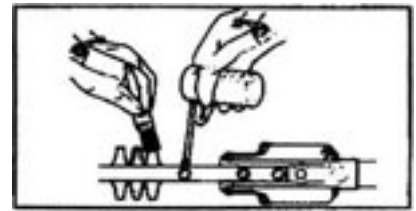
Adjusting the Cutting Angle:

- Place the unit on a flat area and switch off the engine.
- Depress the gear tension lever (A), depress the blade-indexing lever (B).
- Grip rear handle of cutter assembly and hold securely.
- Adjust cutter angle to desired position and release indexing lever into notch.
- Loosen the gear tension release lever (A) and blade-indexing lever (B).



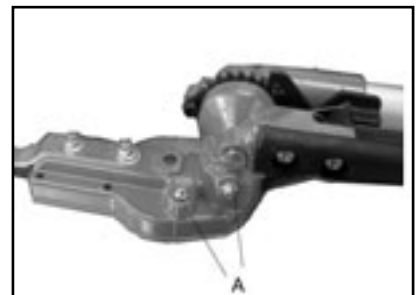
Note: The gear case becomes hot during use, Always grip rear handle when making adjustments to avoid injury from the gear case.

- Clean the cutting blades after every use by brushing off any debris and wiping with a light oil to clean any gummy residue.
- Ensure that the blade bolts are lubricated and wipe off any excess oil before putting away.
- Check the blade tightness. Tighten blade bolts (A) until snug, with a 10mm wrench. Loosen bolts ½ turn. Hold bolts (A) from turning and tighten locknuts (B) with the other 10mm wrench.



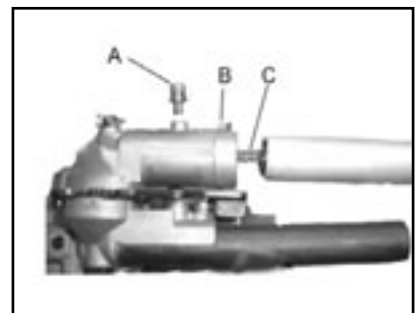
Every 15-25 hours of use, grease the gear housing.

- Clean dirt from grease fittings.
- Carefully pump grease in each fitting (1-2 pumps is enough). Do not force grease as too much pressure will force grease past seals and cause damage.



Every 25 hours of use, grease the drive shaft.

- Remove the locating screw (A) and loosen the clamping screw (B). Remove the flex drive shaft assembly from the gear housing.
- Pull the drive shaft (C) from the shaft assembly and wipe clean. Recoat with a thin coating (15ml) of grease.
- Slide the flex shaft drive back into the drive shaft assembly, being careful not to get dirt on the flex shaft.
- Align the locating screw holes in the gear case and the drive shaft assembly and fix with a screw, then tighten the clamping screw.



MAINTENANCE, cont'd

Sharpening Blades;

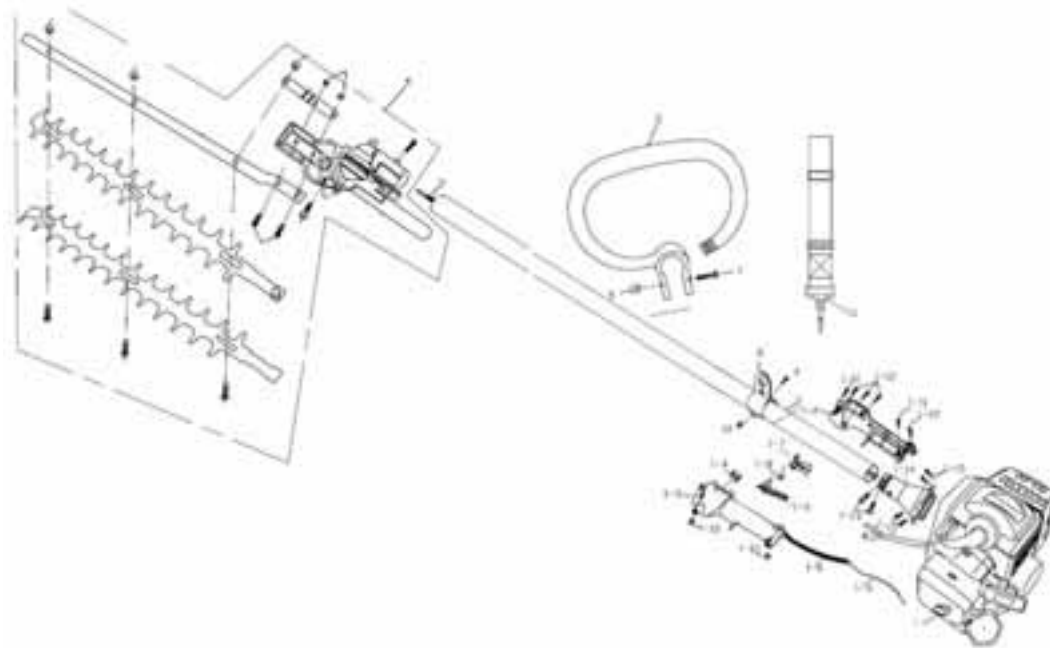
The blades are very sharp. Always wear strong protective gloves when touching the blades.

- Use a screwdriver to separate upper and lower cutters equal distance apart.
- File each edge carefully, following the original direction of the angle of the blade.
- Lubricate the cutting blade as shown on page 7.

Storage:

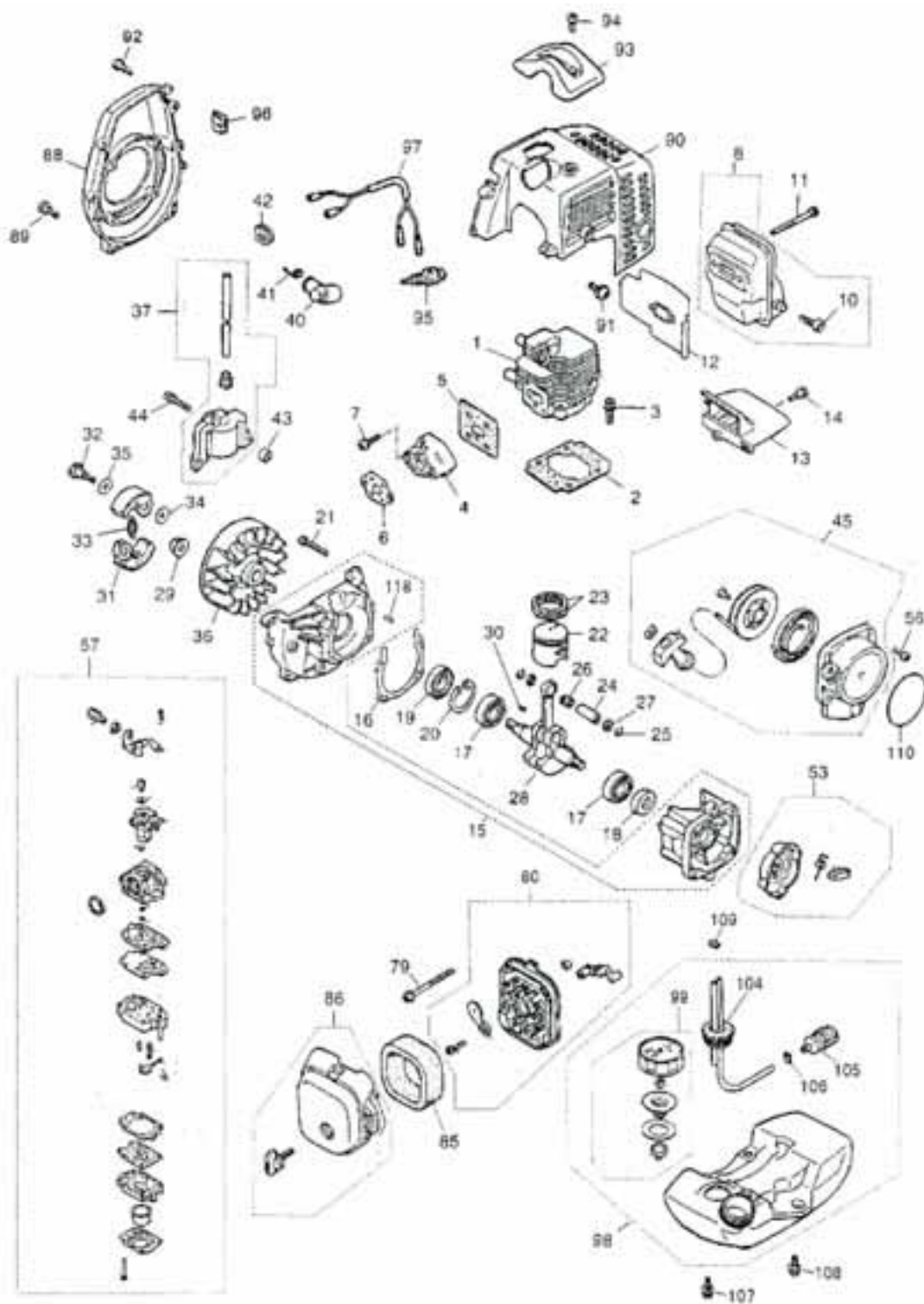
- Clean and lubricate the cutting blades and gear case.
 - Sharpen the cutting blades if necessary.
 - Cover the blades with the blade cover.
 - Store in a dry, dust-free place out of the reach of children.
-
- When storing the hedge trimmer for any length of time it is important to drain down the fuel, both in the tank and the carburettor. Either drain the fuel manually or run the engine until it uses up all the fuel.
 - Remove the spark plug and add a few drops of oil into the spark plug hole.
 - Pull the starter cord gently to confirm that a film of oil covers the engine inside.
 - Tighten the spark plug.

PARTS DIAGRAM AND LIST- MACHINE



No	Part No	Description	Qty
1-2	TH108-1-2	Right Hand Housing Handle	1
1-3	TH108-1-3	Left Hand Housing Handle	1
1-4	TH108-1-4	Stop Switch	1
1-5	TH108-1-5	Throttle Cable	1
1-6	TH108-1-6	Cable Sleeve	1
1-7	TH108-1-7	Throttle Trigger	1
1-8	TH108-1-8	Spring	1
1-9	TH108-1-9	Safety Trigger	1
1-10	TH108-1-10	Nut	2
1-11	TH108-1-11	Screw	2
1-12	TH108-1-12	Screw	2
1-13	TH108-1-13	Screw	4
1-14	TH108-1-14	Clutch Housing Assembly	1
1-15	TH108-1-15	Screw	4
2	TH108-2	Pipe Comp	1
3	TH108-3	Shaft	1
4	TH108-4	Blade Assembly	1
5	TH108-5	Loop Handle	1
6	TH108-6	Nut	1
7	TH108-7	Screw	1
8	TH108-8	Harness Bracket	1
9	TH108-9	Screw	1
10	TH108-10	Nut	1
11	TH108-11	Harness	1

PARTS DIAGRAM- ENGINE



PARTS LIST- ENGINE

No	Part No	Description	Qty	No	Part No	Description	Qty
1	TH126-1	Cylinder	1	40	TH126-40	Cap, plug	1
2	TH126-2	Gasket, Base	1	41	TH126-41	Spring	1
3	TH126-3	Bolt	2	42	TH126-42	Grommet	1
4	TH126-4	Insulator	1	43	TH126-43	Spacer	2
5	TH126-5	Gasket, Insulator	1	44	TH126-44	Bolt	2
6	TH126-6	Gasket, Carburettor	1	45	TH126-45	Recoil Assy	1
7	TH126-7	Screw	2	53	TH126-53	Pulley Assy	1
8	TH126-8	Muffler Assy	1	56	TH126-56	Screw	4
10	TH126-10	Arrestor	1	57	TH126-57	Carburettor Assy	1
11	TH126-11	Bolt	2	79	TH126-79	Screw	2
12	TH126-12	Gasket, Muffler	1	80	TH126-80	Body Assembly	1
13	TH126-13	Plate, Muffler	1	81	TH126-81	Sleeve	2
14	TH126-14	Screw	1	82	TH126-82	Plate, Choke	1
15	TH126-15	Crankcase, comp	1	83	TH126-83	Lever, Choke	1
16	TH126-16	Gasket, Case	1	84	TH126-84	Screw	1
17	TH126-17	Bearing	2	85	TH126-85	Element	1
18	TH126-18	Oil Seal	1	86	TH126-86	Cover Assembly	1
19	TH126-19	Oil Seal	1	88	TH126-88	Cover, Fan	1
20	TH126-20	Snap Ring	1	89	TH126-89	Screw	4
21	TH126-21	Screw	4	90	TH126-90	Cover, Engine	1
22	TH126-22	Piston	1	91	TH126-91	Screw	1
23	TH126-23	Ring	2	92	TH126-92	Screw	2
24	TH126-24	Pin	1	93	TH126-93	Guard, Plug	1
25	TH126-25	Snap Ring	2	94	TH126-94	Screw	1
26	TH126-26	Bearing	1	95	TH126-95	Spark Plug	1
27	TH126-27	Washer	2	96	TH126-96	Grommet	1
28	TH126-28	Crankshaft comp	1	97	TH126-97	Cord complete	1
29	TH126-29	Nut	1	98	TH126-98	Tank Assy	1
30	TH126-30	Key	1	99	TH126-99	Cap Assy	1
31	TH126-31	Shoe, Clutch	2	104	TH126-104	Pipe comp	1
32	TH126-32	Screw	2	105	TH126-105	Filter Assy	1
33	TH126-33	Spring	1	106	TH126-106	Clip	1
34	TH126-34	Washer	2	107	TH126-107	Screw	2
35	TH126-35	Washer	2	108	TH126-108	Screw	1
36	TH126-36	Rotor	1	109	TH126-109	Clip	1
37	TH126-37	Coil Assy	1	110	TH126-110	Label	1
				118	TH126-118	Pin	3

EC DECLARATION OF CONFORMITY

The undersigned, as authorised by: Handy Garden Machinery Ltd

Declares that the following equipment is manufactured and conforms to the Directive 2000/14/EC of the European Parliament and of the council on the approximation of the laws of the Member States relating to the noise emission in the environment by equipment for use outdoors.

Machine Type: Long Reach Hedge Trimmer

Machine Model: THLRT2600

Mass in kg: 6.0kg

Cutting Width: 36.5cm

Net Installed Power: 0.75kW

The technical documentation is kept by: Handy Garden Machinery Ltd

The conformity assessment procedure followed was in accordance with Annex VI of the Directive 2000/14/EC

Measured Sound Power Level: 104 dB(A)

Guaranteed Sound Power Level: 105dB(A)

A copy of this certificate has been submitted to the European Commission and to the EU Member State.

Place of Declaration: Hobley Drive, Stratton St Margaret, SWINDON, Wiltshire. SN3 4NS

Name: Mr Simon Belcher

Title: Managing Director

Company: Handy Distribution Ltd

Address: Hobley Drive, Stratton St Margaret, Swindon, Wiltshire SN3 4NS

Signature:



Date: 17th January 2008

To order spare parts and see the complete range of garden machinery and garden equipment from Handy, visit:

www.thehandy.co.uk

